

BRAEDALE BAMBAM VG-CAN ST 0200HO03274



Reg.#: HOCANM10793761 Born: May 25, 2001 aAa: 312546 DMS: 345
Breeder: BRAEDALE HOLSTEINS, Cumberland, Ontario, Canada

SUMMERSHADE IGNITER EX-CAN EXTRA

BRAEDALE BALER TWINE VG-86-2YR-CAN 18*

2-01 305 12,096 4.9% 591 3.3% 402 kg
Lifetime: 27,051 5.0% 1,359 3.7% 1,005 kg

MAUGHLIN STORM EX-CAN EXTRA

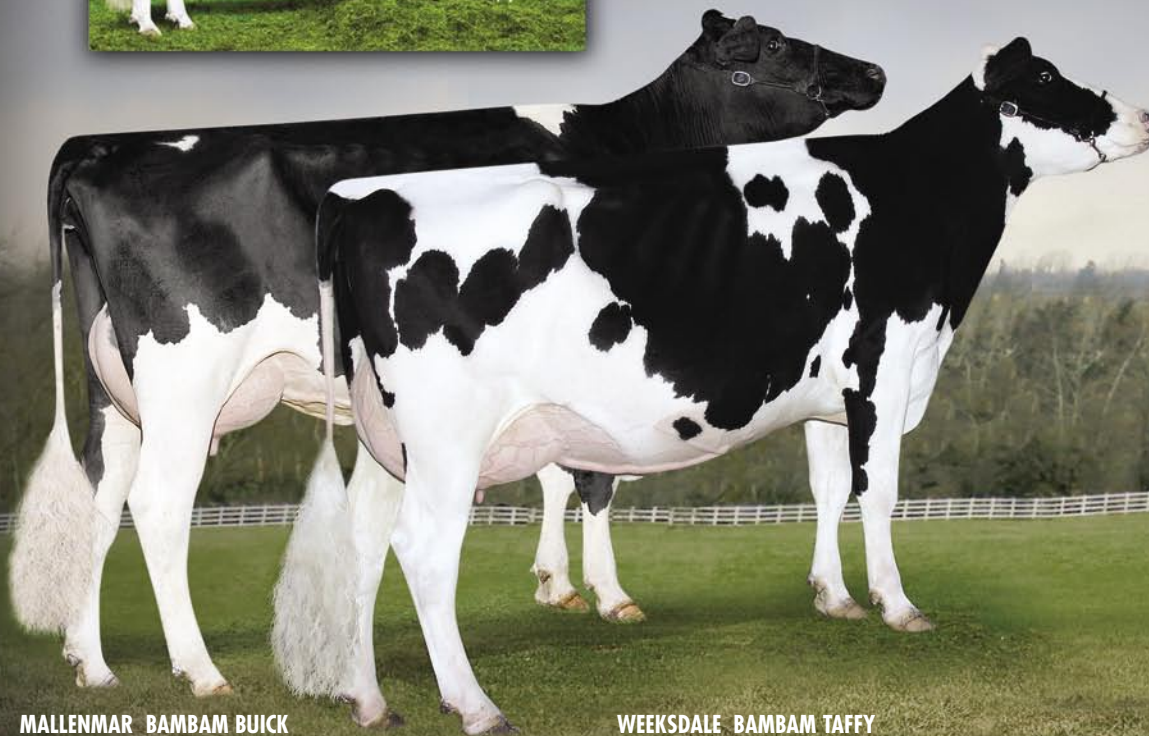
BRAEDALE GYPSY GRAND VG-88-5YR-CAN 37*

5-06 305 13,945 4.8% 665 3.1% 436 kg
Lifetime: 52,798 4.9% 2,575 3.6% 1,913 kg

MARK CJ GILBROOK GRAND VG-CAN EXTRA

BRAEDALE MOONRIVER GP-83-2YR-CAN

2-00 305 10,118 4.1% 411 3.6% 365 kg
Lifetime: 12,782 4.1% 522 3.6% 465 kg



MALLENMAR BAMBAM BUICK TB-85-2A-CAN/TB-85-2A-CAN

2-05 305 8,704 3.9% 340 3.2% 281 kg
MALLENMAR FARMS, Seeleys Bay, Ontario, Canada

WEEKSDALE BAMBAM TAFFY TB-85-2A-CAN/TB-85-2A-CAN

3-05 305 9,972 4.0% 400 3.1% 307 kg
ELMER WEEKS, Breadalbane, Prince Edwards Island, Canada

SEMEX
FRANCE

BP 63 - 69751
Charbonnières-les-Bains-Cedex-France
Tél : 04 78 87 80 08
Fax : 04 78 44 20 02

BAMBAM

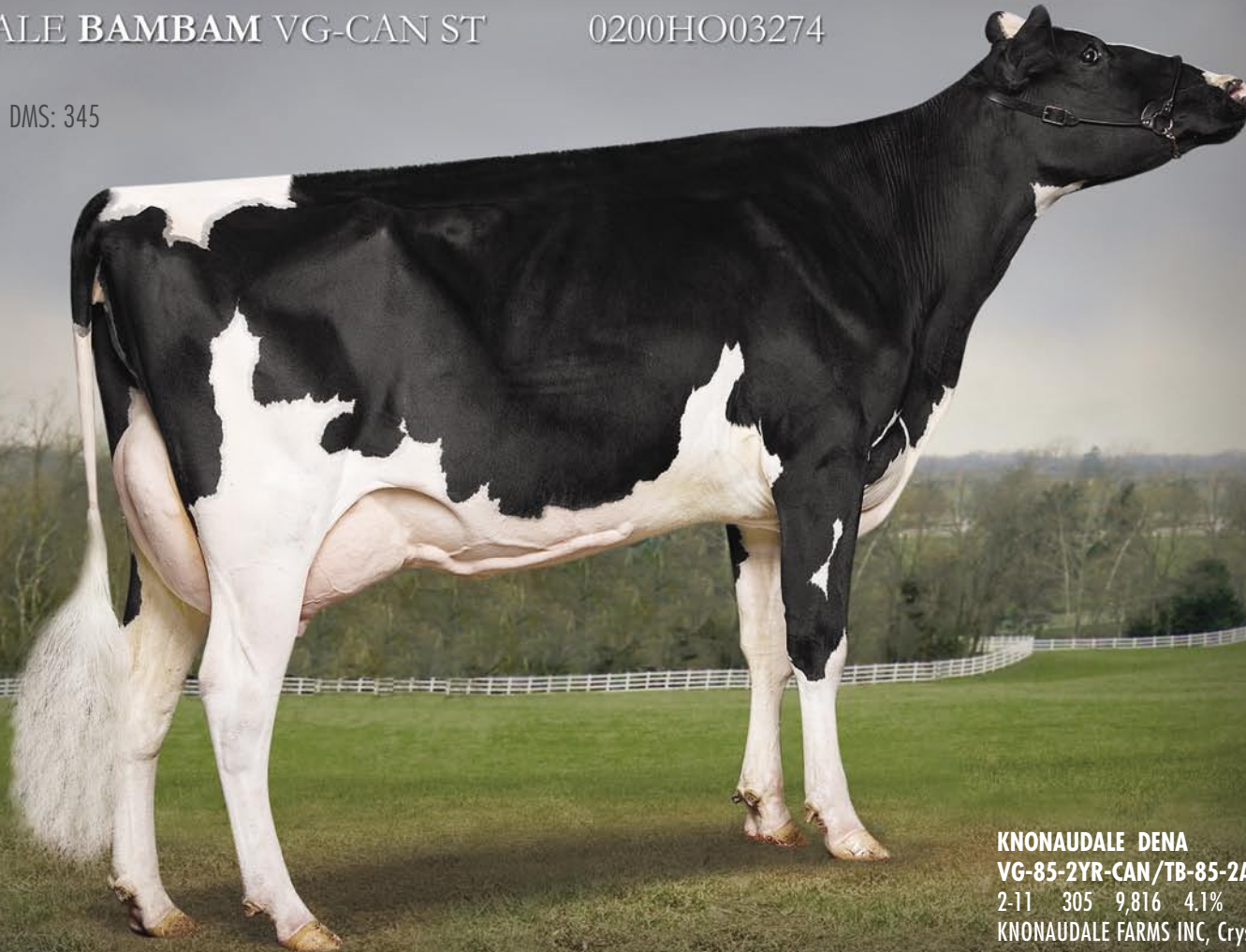


BRAEDALE BAMBAM VG-CAN ST

0200HO03274

Igniter x Storm

aAa: 312546 DMS: 345



KNONAU DALE DENA

VG-85-2YR-CAN/TB-85-2A-CAN

2-11 305 9,816 4.1% 399 3.3% 325 kg

KNONAU DALE FARMS INC, Crysler, Ontario, Canada