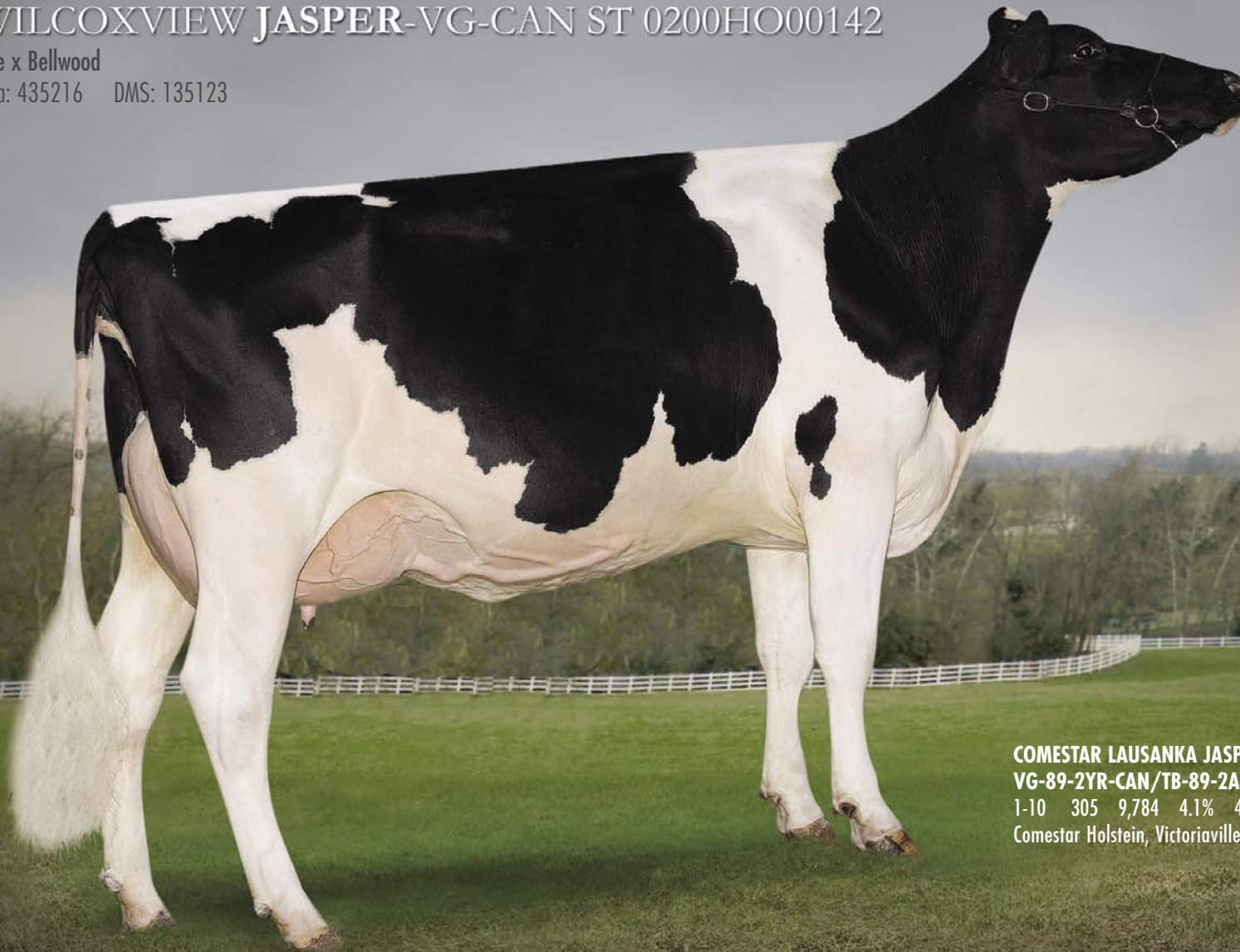


JASPER

WILCOXVIEW JASPER-VG-CAN ST 0200HO00142

Lee x Bellwood

aAa: 435216 DMS: 135123



COMESTAR LAUSANKA JASPER

VG-89-2YR-CAN/TB-89-2A-CAN

1-10 305 9,784 4.1% 406 3.0% 289 kg proj.

Comestar Holstein, Victoriaville, Québec, Canada

WILCOXVIEW JASPER-VG-CAN ST 0200HO00142



Reg.# HOUSAM128620869 Born: June 5, 1999 aAa: 435216 DMS: 135123
Breeder: WILCOX FARM INC, Roy, Washington, USA

COMESTAR LEE EX-CAN EXTRA

WILCOXVIEW BELLWOOD JASMINE VG-87-2YR-USA GMD DOM 1*

1-11 305 10,723 3.9% 416 3.3% 352 kg
Lifetime: 15,295 3.9% 604 3.3% 508 kg

MAIZEFIELD BELLWOOD EX-96-USA SP GM

WILCOXVIEW CINDER JULIE EX-91-3YR-USA

3-05 305 11,698 3.8% 440 3.2% 373 kg
Lifetime: 23,419 3.7% 871 3.2% 761 kg

HIGHLIGHT MR MARK CINDER EX-94-USA EXTRA GM

WILCOXVIEW BEAUT LADY JULIE G-77-2YR-USA

2-02 305 9,013 4.2% 376 3.1% 283 kg
Lifetime: 11,589 4.1% 475 3.2% 373 kg



FAVREAUTIERE JASPER KONYA VG-87-2YR-CAN/TB-87-2A-CAN

1-11 305 5,425 3.5% 189 3.0% 162 kg
FERME FAVREAU & FILS INC., Ste. Christine, Québec,
Canada

REAL-IT-HOLSTEINS, South Durham, Québec, Canada

VIORIS JASPERS JULIE VG-87-2YR-CAN/TB-87-2A-CAN

2-01 305 8,242 4.0% 331 3.3% 268 kg
BRUCE & SUSAN MODE, Vankleek Hill, Ontario, Canada


SEMEX
FRANCE

BP 63 - 69751
Charbonnières-les-Bains-Cedex-France
Tél : 04 78 87 80 08
Fax : 04 78 44 20 02